

REMONDIS Industrie Service



# The Bramsche Industrial Recycling Centre

For all things hazardous

**REMONDIS®**

WORKING FOR THE FUTURE



## Working together for a sustainable future

REMONDIS Industrie Service is the REMONDIS Group's specialist company for handling hazardous waste. Our Bramsche Industrial Recycling Centre plays a key role in ensuring that over 600 types of hazardous waste are processed and treated using environmentally compatible systems.

### Recovering raw materials from waste

The circular economy is at the core of REMONDIS' business. We also use innovative waste treatment solutions so that we can recover key raw materials from hazardous waste. With the development and implementation of innovative processes, we recover primary raw materials and use waste, among other things, as an energy source for energy production.

### Treating waste safely & responsibly

Safety is our no. 1 priority when it comes to treating and recycling hazardous waste: we not only protect our employees but also play an active role in protecting the environment and society as a whole. Our staff in Bramsche are committed to creating a better future every single day.

### For an innovative future

We are actively helping to shape the future by continuously investing in our treatment facilities and optimising the way hazardous waste is recycled. Innovation and further development are an everyday part of our business. They not only enable us to improve well-established processes but also to recover valuable natural resources. Just one example: we are now able to recycle practically 100% of the aerosol cans we handle. Thanks to our comprehensive, pioneering work, we are one of the engines driving forward the circular economy in Europe. We are a reliable partner, advisor, and knowledge provider for our customers and partners, working together to find solutions and pave the way for the future.

"For us, recycling is not simply a job. We are working for the future. We are committed to treating hazardous waste safely every single day to keep people and the environment safe."

Christian Deing, Regional Manager at  
REMONDIS Industrie Service



## We close material life cycles. Including substances others won't touch

Special levels of expertise are needed to manage hazardous waste. The Bramsche Industrial Recycling Centre is a specialist in this complex field. Thanks to its expertise and extensive experience, it is able to offer methods of waste treatment that are unique across both Germany and Europe.



Making the most of our specialist knowledge, we advise our customers on the most suitable method of waste treatment – something we have been doing for over 40 years now

### Five key areas

Our activities centre around five areas: our full-service system RESPRAY is responsible for collecting, transporting and recycling full and partially full aerosol cans. Our second key area covers all activities involving the transport, treatment and processing of specialty chemicals that are particularly dangerous, reactive or toxic. Furthermore, we produce solid refuse-derived fuel (RDF) at our site in Bramsche as well as marketable grades of scrap metal. Last but not least, residual materials and contaminants that are unable to be recycled for reuse can be thermally treated in the Bramsche plant's high-temperature incinerator.

### A wide-ranging portfolio

The Bramsche Industrial Recycling Centre, however, provides a great deal more than just these five key areas: over 600 types of industrial waste can be treated here – no matter whether it is solid, semi-solid, liquid or gaseous. This means that the Bramsche Industrial Recycling Centre is able to handle practically every kind of material generated by industrial businesses – both with a low or high-risk potential. The plant has become a central component of Europe's industrial circular economy thanks to the extensive catalogue of materials it accepts, the specialist – and in some cases unique – processes it uses and its capacity to process approx. 80,000 tonnes a year.



The plant treats hazardous waste from large and small businesses as well as from local authorities, scientific institutes, military facilities, private households, schools and universities

### Closed life cycles

Our priority is always on recycling. Which is why our processing and treatment activities have been designed to close material life cycles wherever possible. The plant, for example, uses the very different types of materials it accepts to produce high-quality RDF. And it recycles the scrap iron, aluminium and tinplate that it recovers from treating contaminated metal packaging and aerosol cans.

### Best possible processes

The centre in Bramsche uses both thermal and chemical-physical systems to ensure the different materials it accepts are processed, recycled and treated safely. All of the facilities have been perfectly equipped: it operates, for example, fully enclosed areas that have been made inert using nitrogen for processing particularly complex materials or waste. A network of measuring, recording and monitoring instruments ensures everything runs smoothly in the best possible way.

### High safety standards

REMONDIS Industrie Service also meets the highest safety standards in Bramsche thanks to the safety systems it has installed throughout the whole of the plant. Reliable systems are in place to control air pollution, soil protection and water pollution as well as to prevent fires and explosions. The additional, extensive internal safety measures and ongoing monitoring procedures also guarantee that the treatment facilities are operated safely.



Innovative spirit drives progress: our experts develop their own technological advances – paving the way for new treatment and recycling methods



- |   |  |   |   |
|---|--|---|---|
| 1 Administration offices                      | 8 Dismantling centre for lithium-ion batteries | 15 Supply area                          | 22 Workshop                                       |
| 2 Weighing equipment/material acceptance zone | 9 Acceptance area for liquids                  | 16 Shredder for plastic packaging (IBC) | 23 RESPRAY facility                               |
| 3 Laboratories/staff rooms                    | 10 Container washing facility                  | 17 Chemicals treatment facility         | 24 Inert shredder facility                        |
| 4 High-temperature incineration plant         | 11 Wash hall                                   | 18 Gas storage area                     | 25 Biofilter/provision areas                      |
| 5 Storage tanks                               | 12 Recycling containers                        | 19 RESPRAY sorting facility             | 26 High-bay warehouse/identification of materials |
| 6 Water storage area                          | 13 RDF facility                                | 20 RESPRAY supply area                  | 27 Vehicle processing area                        |
| 7 Battery treatment                           | 14 Metal processing area/conditioning facility | 21 Container repair                     |   |

Founded in 1969/70, the Bramsche site has become one of the leading centres in Europe for treating industrial waste thanks to its high-performance facilities.

# The Bramsche Industrial Recycling Centre

The Bramsche plant is the place the REMONDIS Group primarily turns to for treating and processing materials that are particularly dangerous. Why? Because it offers services that are hard to find elsewhere.



## A true masterpiece

The Bramsche Industrial Recycling Centre offers services that are hard to match. Thanks to its specialist expertise, it is able to recycle and/or dispose of practically every type of hazardous waste and is considered to be one of the highest-performing and most versatile plants in Germany and Europe.

And it is for these reasons that firms operating in the chemicals industry, solar technology and other high-tech industries as well as local authorities and other waste management companies rely on this plant's know-how and solutions. Located in the Osnabrück region, this centre offers a pioneering range of services – enabling REMONDIS Industrie Service to accept, safely treat and recycle solid, semi-solid, liquid and even gaseous materials.

### Uniquely good

More than 600 types of hazardous waste can be treated in Bramsche i.e. practically all of the substances produced by industrial firms that may potentially pose a risk. The centre focuses on four main areas: firstly, on recycling aerosol cans – this particular division handles

ca. 4,000 t of aerosol cans a year. REMONDIS Industrie Service recycles all kinds of aerosol cans and their contents and is the leading business in this field in Germany. Secondly, on treating and disposing of dangerous chemicals. The plant's specialty chemicals division has a strategic edge over its competitors as it is able to directly incinerate these materials in its high-temperature incineration facility. Thirdly, on producing high-quality refuse-derived fuels. 40,000 t of RDF are made in Bramsche every year from hazardous wastes (such as oils, solvents and other chemicals) that can then be used by cement works and power stations instead of fossil fuels. And fourthly, on recycling contaminated metal containers. REMONDIS Industrie Service removes any dangerous deposit build-ups using safe and environmentally

friendly methods, processes the containers and then returns high-quality metals to the market for reuse.

The air in the Bramsche Industrial Recycling Centre's production areas is captured and transferred via a network of pipes to the central exhaust air treatment unit. Thanks to its specialised processes and its capacity to recycle ca. 65,000 t of materials a year, our centre in Bramsche is playing a key role in Europe's circular economy – by implementing environmental, economic and social goals in equal measure. Here at REMONDIS Industrie Service sustainability is at the very heart of both our business and our company philosophy.

### Facts & Figures: Industrial Recycling Centre

Employees	ca. 180
Surface area	100,000 m <sup>2</sup>
RDF	ca. 40,000 t/a
RESPRAY	ca. 4,000 t/a
Specialty chemicals	ca. 2,000 t/a
Metal recycling	ca. 3,000 t/a
Total input of all material flows	over 65,000 t/a

“Ensuring our company is fit for the future is an ongoing process. All of our employees at our plant work together to achieve this goal each and every day.”

Christian Deing, Regional Manager



**REMONDIS Industrie Service GmbH Bramsche**  
Your expert for hazardous waste disposal and recycling of hazardous waste

  
Family-run company

> 40

  
Years of experience with hazardous waste

Located in Lower Saxony



> 120

  
Own special vehicles

Public sector clients and commercial and industrial customers



> 180

  
Employees

> 600

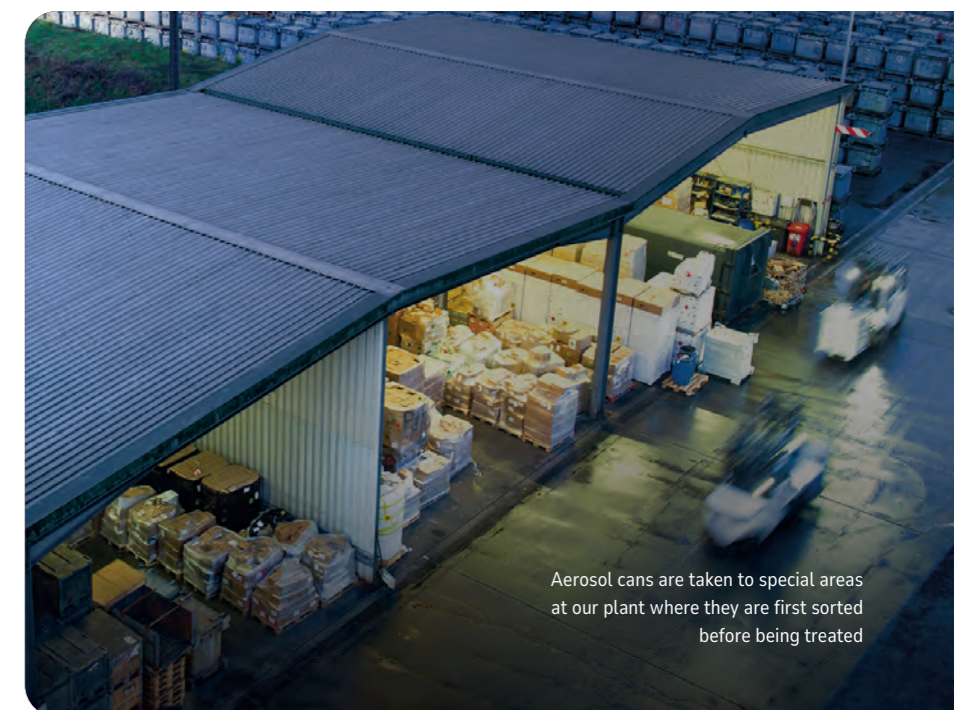
  
Types of hazardous waste

62

  
Thou. t dangerous waste/year

9

  
Facilities for hazardous waste



Aerosol cans are taken to special areas at our plant where they are first sorted before being treated

## Working together for a safer & greener world

Our field of expertise is hazardous waste. We make the most of well-established systems and develop advanced solutions to ensure dangerous substances are handled in a safe and sustainable way. We share our knowledge of future-oriented innovations with the rest of the REMONDIS family so that we can all help each other. Over the decades, this shared support has given us an unmatched wealth of knowledge and experience and a leading position within our industry.

### Pioneering facilities – investing in the future

By operating its range of different processes, our Bramsche Industrial Recycling Centre has the unique advantage that it is able to deliver practically every industrial waste treatment service that may be required. Eliminating dangerous substances, transporting hazardous goods and researching new recycling technologies – the services offered by REMONDIS Industrie Service are anything but ordinary and have a huge impact. Being an expert for safely storing and transporting dangerous substances and a reliable partner for recycling hazardous waste, the plant in Bramsche performs vital work for society. The plant's dedicated workforce is at the core of its sustainable success. People that use their skills to manage and treat hazardous waste play a key role in protecting and maintaining our environment. Their work ensures that people's lives and nature remain safe, clean and protected. Their dedication not only preserves our environment but also conserves natural resources. Which is why we are also investing in the future here as well: our company stands out with its crisis and future-proof strategy – especially in these times of skills shortages and lack of apprentices. Against this backdrop, it is particularly pleasing to see the continuously high demand for apprenticeship jobs at REMONDIS Industrie Service, whether it be in the field of truck driving, logistics, plant technology, chemicals, administration or sales. By offering its own chemical technician, REMONDIS Industrie Service is making sure it can continue to deliver high-quality and reliable waste

treatment services and environmental protection in Bramsche in the future as well. The Bramsche centre also trains apprentices to become industrial electricians, industrial mechanics, HGV drivers, environmental technicians for the circular and waste management economy and forwarding agents.

### Committed to our mission – and social responsibility

REMONDIS Industrie Service has been employing people with disabilities at its plant in Bramsche since 2018. By adapting technology, employees with a physical or learning disability are able to have a fully-fledged job. A win-win situation: these often socially disadvantaged members of society are given the opportunity to become part of the workforce and be financially independent. Moreover, the different backgrounds, skills and life experiences promote a positive working environment, creativity and innovation. The measures taken to implement inclusion into the company's ongoing operations and to make all parties aware of what was involved were carried out in collaboration with local institutions, such as the District of Osnabrück's social committee and specialist integration office. The Bramsche plant was recently presented with the Lower Saxony Social Award for its inclusive work.



Go online to find out more about the career opportunities at our company



RDF made from hazardous waste is an alternative type of fuel that helps to conserve natural resources and curb climate change

## RDFs – creating new energy

Coal, gas and oil are still being used as a guarantee for progress. And yet supplies of these fuels are being depleted rapidly. Which is why it is so important to research and develop alternative kinds of fuel. This is precisely what we have done – and are now able to supply a high-quality, brand-name fuel produced from residual industrial materials.

REMONDIS Industrie Service markets liquid and solid refuse-derived fuels (RDFs). These are primarily used by cement works as a substitute for virgin fossil fuels – helping to conserve natural resources and cut carbon emissions. One of the industrial-scale facilities used to produce RDF from industrial waste is located at the Bramsche site. We use combustible waste with defined properties to produce these fuels. Practically 100% of all materials delivered are recycled. Over 90% of the input material leaves the plant as a fuel. The

majority of the material left over at the plant is processed iron metal that can be sent on for materials recycling.

### A multi-stage process

A multi-stage treatment process is used at the Bramsche Industrial Recycling Centre to ensure that the fuel produced is both homogenous and of a consistent quality. Using different systems – many of which we have developed ourselves – we are able to treat materials that are particularly challenging. Such material

includes, for example, different kinds of dust that may only be handled in an enclosed system. Exacting quality control measures are carried out at each stage of the process. These guarantee that quality standards remain consistent and ensure that the limit values specific to our customers' plants are strictly adhered to.

### Producing top-quality RDF

- 01** **Acceptance:** meticulous checks & analyses are carried out on all incoming materials.
- 02** **Pre-treatment:** shredding & sorting as required; waste/other materials that are not suitable for producing RDF are removed.
- 03** **Conditioning:** the solid & semi-solid wastes are homogenised by mixing in additives.
- 04** **Processing:** ultra-fine shredding & further homogenisation in a forced action mixer; addition of conditioning agents.
- 05** **Production:** the processed materials pass through various separation/screening facilities with different grain sizes; recyclable materials are recovered & contaminants removed.
- 06** **Use:** we transport the final RDF product to cement works & power stations; the contaminants are sent on to incineration plants & the metals to metal recycling facilities.

### Facts & Figures: RDFs

Input	distillation residue, residual resin, paint, varnish, sealants, glues, sludge containing solvents
Output	RDF
Process	pre-treatment, processing, conditioning, screening, removal of foreign particles
Throughput	40,000 t/a

The quality features of our RDFs are precisely defined. This is true for both their calorific value as well as other characteristics such as their grain size and chemical properties

# RESPRAY – turning old cans into new

Recycling aerosol cans really is a job for specialists. The Bramsche Industrial Recycling Centre is considered to be the no. 1 company in Europe for this complex task. The company's pioneering full-service system RESPRAY guarantees that full and partially full aerosol cans from industrial and commercial businesses are collected, transported and recycled safely.



We return the aluminium and tinfoil from the cans to market so they can be reused. The contents and propellants are recovered or disposed of using environmentally compatible processes



Aerosol cans are made of tinfoil or aluminium – i.e. of materials that are well worth recovering and returning to production cycles. Before this can be done, however, the sprays' active substances and, above all, the propellants must be removed from the aerosol cans – a job for the Bramsche Industrial Recycling Centre. We process all kinds of aerosol cans at our facilities. It makes no difference what shape or size the cans are, how much content is left in the cans, what the contents are or what type of propellant has been used.

### Choose the safe option

Full and partially full aerosol cans pose a variety of risks – all the way through to an

explosion. Which is why special safety measures have to be taken when handling them, especially if large quantities of cans are involved. We use a combination of mechanical and thermal separation processes to treat aerosol cans and ensure that any highly flammable materials are captured and made safe.

### Facts & Figures: RESPRAY

Input	All types of aerosol cans
Process	separation process under inert conditions
Output	aluminium, tinfoil, residual materials
Throughput	4,000 t/a

### A safe collection system

Two main features of partially full and empty aerosol cans are their light weight and their large volume. At the same time, it is important not to underestimate the risks posed by the propellants. All these have led to special requirements being put in place for both the transport and packaging of these cans. RESPRAY meets all of these: the Bramsche Industrial Recycling Centre provides its customers with a collection system that uses uniform containers and guarantees that aerosol cans are handled, transported and recycled safely. It looks at their customers' individual needs and then decides with them what type and number of containers are required and how often they need to be collected.

### Treatment in the RESPRAY facility

Special safety measures must be taken when processing the carefully sorted aerosol cans. Which is why they are treated in batches using a mechanical-physical process under inert conditions and then separated into different individual fractions.

### Returning recyclable materials for reuse

The cans' metal contents are separated into tinfoil and aluminium scrap and, if necessary, cleaned to remove any impurities. We then return the recovered metals to production cycles so they can be reused. This helps to conserve the natural reserves of these valuable raw materials.



Our storage and transport containers – such as our SP-800 and STB-120 boxes – meet all customer requirements and all safety standards



# Specialty chemicals in safe hands

As specialty chemicals can be particularly dangerous, reactive and/or toxic, they have their own special position among the different kinds of industrial waste. REMONDIS Industrie Service deals exclusively with these problematic substances – winning over its customers with its portfolio of specialist services.

The company offers a range of services for treating specialty chemicals that covers three areas: transport, treatment and direct incineration. All three services are provided centrally by the Bramsche Industrial Recycling Centre.

### Transporting specialty chemicals

We provide a reliable service for transporting the chemicals from our customers to our facility in Bramsche. A variety of containers are available for transporting these substances by road, including special salvage containers. Other services here include working with our customers to identify their chemicals, carrying out inspections where necessary and classifying the substances in accordance with hazardous waste law.

### Treating specialty chemicals

The specialty chemicals are treated in a special cabin with a black and white area and an exhaust air scrubber: For downstream systems, it is often necessary to repack the specialty chemicals into other size units beforehand. The empty containers such as drums

and IBCs are rinsed, decontaminated and detoxified before they are reused or disposed of properly. Further steps in the treatment of chemicals include the dilution of substances and solutions, neutralization and redox reactions as well as the conditioning of special chemicals. We treat reactive chemicals such as pyrophoric organometallic compounds under inert conditions in a glovebox.

### Handling gas cylinders

Pressurised steel cylinders must be handled with the utmost of care. They should always be left to the professionals – and not just when they are being used but afterwards as well. We know what must be done when pressurised steel cylinders need to be disposed of: no matter whether they are full or empty, big or small, intact or damaged. In fact, damaged pressurised steel cylinders may not be transported as they are – but that is not a problem for us either: we transport them in special salvage containers. All of the hazardous residual gases must first be removed before the pressurised steel cylinders can be recycled. We do this

using our high-temperature incinerator, which is operated in line with exemplary environmental standards. Gases stored in pressurised cylinders are taken to our plant's chemical-physical treatment facility where – depending on the quality and contents – they can be neutralised via the scrubber system or directly connected to the incineration facility. One special feature here is the centre's ability to treat and process hydrogen fluoride in pressurised cylinders.

### Portfolio

We transport and treat pressurised steel cylinders on your behalf. It makes no difference whether they contain gases, chemicals or other reactive substances, such as propane/butane, chlorine, refrigerants (CFCs), hydrogen sulphide, nitrous gases, phosgene, organometallic substances, chlorosulfonic acid, diesel starter and many, many more. There is nothing, in fact, that we will not take from you.

### One partner, a host of benefits

You are on the safe side when you work with us. We know all the statutory rules and regulations covering the management and treatment of hazardous waste and always adhere to them. The processes we use to recycle the gas cylinders are absolutely safe and have been approved accordingly. At no point can the gas escape. Even if the cylinders are damaged or corroded.

One of the main advantages of the Bramsche Industrial Recycling Centre is its ability to directly incinerate materials in its hazardous waste incinerator



Specialty chemicals must be handled with utmost care. Our specially trained employees are experts in their field and follow the strictest of safety measures when accepting and treating these materials to protect both humans and the environment

### Directly incinerating specialty chemicals

During the direct incineration process, the specialty chemicals are fed straight into the furnace via connecting systems for both liquid and gaseous materials. One special feature of the Bramsche Industrial Recycling Centre is its high-temperature incinerator: the muffle furnace's unique construction enables substances with a longer reaction time to react safely. At the same time, this incinerator has a wide range of direct connections to the plant's various safety zones. The feed lines to the burner guns are so short here that a blockage or fault can be ruled out or simply and safely dealt with. Thanks to this system, organometallic compounds with a high volume of solid substances, for example, can be safely disposed of. Reactive and toxic chemicals or mixed substances can be incinerated at temperatures over 1,100 °C via a special feed system using very small drums.

We make the very most of the recycling potential of these materials whenever we can to promote and advance a future-oriented circular economy. Wherever possible, we

recover recyclable materials so they can be used to make new products or transformed into refuse-derived fuel. Liquid, pumpable and gaseous wastes and small volumes of solid waste such as carbides, phosphides and other reactive chemicals are incinerated in the incinerator in Bramsche at particularly high temperatures. As is the case with all our facilities, our operations here are targeted at protecting the environment and conserving natural resources. This means that the whole incineration process is not only very clean – it adheres strictly to all emission ceiling values – but also extremely effective. Even here, at the lowest level of the waste hierarchy, it remains our mission to make the very most of the materials and thermal recycling potential of the substances being treated.

### Facts & Figures: Treatment of specialty chemicals

Input	specialty chemicals from industry, research institutes
Process	classification, transport, sorting, pre-treatment, conditioning, processing, disposal or recycling
Output	hazardous waste incineration, hazardous waste landfill, underground hazardous waste storage facility
Throughput	2,000 t/a

These services are already being provided across Europe by both the company's other locations and its cooperation partners – a network that is growing all the time. No matter where it may be, priority is always put on ensuring that strict safety measures are in place and that the quality remains at the same high level at all times



# Ideally equipped: how we master each individual challenge

The Bramsche Industrial Recycling Centre is perfectly equipped to process the different kinds of hazardous waste in line with their specific requirements. This work is carried out, on the one hand, by our wide range of facilities and, on the other, by our support teams.

A centre of knowledge and know-how: experts from a whole range of different specialist areas and fields work in the various departments at our plant

### Conditioning – top-quality treatment

The plant has high-performance conditioning facilities for pre-treating liquid, solid and semi-solid waste. Once any solids have been removed, the liquid waste is pumped into one of the different groups of tanks in the tank storage area. Depending on their quality, these materials are then used to make substitute fuel or fed into our direct incineration system. Solid and semi-solid waste undergoes a multi-stage treatment process during which it is

shredded, mixed, homogenised and cleaned. A shredder facility operated under inert conditions (using nitrogen) is on hand for treating problematic materials. Treatment is primarily carried out in enclosed systems. Recyclable materials, such as metals, are recovered and processed so they can be sent on for recycling.



The tank storage area at the Bramsche Industrial Recycling Centre: equipped to handle the acceptance, sedimentation and fine sedimentation of liquid waste materials

### Facts & Figures: conditioning facility

Input	liquid, semi-solid & solid industrial waste
Process	storage tanks, shredder facility, homogenisation & mixing technologies
Output	RDFs, metals, special chemical direct incineration, hazardous waste landfill, underground hazardous waste storage facility, hazardous waste incineration
Throughput	60,000 t/a

### Cleaning & inspections – cleanliness comes first

Our cleaning facility first removes any residue and deposits from the hazardous waste storage containers. Being a BAM-approved inspection body (BAM: Federal Institute for Materials Research and Testing), we also carry out any necessary inspection work on the IBCs and other types of container and approve them. We also run our own workshop to maintain and retrofit the containers.

### Identification & supplies – carefully tested, safely stored

The individual properties of a material determine which treatment process it undergoes at our plant. Which is why our team in charge of identifying the waste first takes samples so they can be analysed in our own plant laboratory prior to treatment. The Bramsche Industrial Recycling Centre has a 5,000 m<sup>2</sup> storage area for temporarily storing the materials and transferring them to the various facilities. This area is divided up into a high-bay warehouse with 1,680 spaces made inert by nitrogen and a particularly secure gas storage area as well as a number of sections, some of which are under cover.

### Cleaning used air – with a 2,000 m<sup>2</sup> biofilter

The air in the Bramsche Industrial Recycling Centre's production areas is captured and transferred via a network of pipes to the central exhaust air treatment unit.

Top priority is given to prevention: the plant's fire-fighting unit is responsible for planning fire protection measures and ensuring the fire-protection systems are fit for purpose at all times



A wide range of vehicles to cover every eventuality: special requirements are often in place regulating how hazardous waste must be transported. Our vehicles have all the equipment needed to deal with such cases



## Well-structured logistics solutions. We leave nothing to chance

Managing hazardous waste requires the highest levels of know-how – and the same is true for the logistics. We have the vehicles and storage systems to handle all types and volumes of materials, all of which meet all statutory safety requirements. No matter whether it involves solid, semi-solid, liquid or gaseous waste: we have the right solution for each and every type of hazardous waste.

### Reliable solutions

Having the best possible storage systems and the vehicles equipped to transport the containers are both essential if such materials are to be safely handled. Our qualified and experienced employees provide our customers with the advice they need and draw up complex logistics solutions for them that save them time, space and money – from the punctual collections, to the safe transport on one of our special vehicles, though to the final recycling / treatment plant.

### Safe transport systems

Our extensive fleet of modern specialist vehicles guarantees that the materials are transported safely to the Bramsche Industrial Recycling Centre or to one of the REMONDIS Group's other facilities. All of the vehicles we use are ADR-approved and undergo regular external safety inspections in addition to the daily checks carried out by the drivers.

### Dependable partners

In addition to our own vehicles, we also use transport systems operated by qualified partner forwarding businesses in Germany and Europe. Here, too, priority is always given to safety: we only collaborate with firms that are accredited specialist waste management companies in accordance with the 'EfbV' (Federal Ordinance on Specialised Waste Management Companies).

### Dependable partners

- \_ AS 1 vehicles for various hazardous waste containers (containers, drums etc)
  - \_ AS 1 articulated vehicles (open & enclosed semi-trailers for containers, drums etc)
  - \_ Skip lorries for ASK skips up to 10 m<sup>3</sup>
  - \_ Hook-lift skip vehicles for skips up to 33 m<sup>3</sup>
  - \_ MSTS hook-lift vehicles for MSTS skips, platforms & tanks
  - \_ MSTS multi-lift vehicles for multi-containers & DIN skips
  - \_ Oil collection vehicles for collecting oily waste/materials from garages
  - \_ MOBIWER vehicles providing a full collection service for garages
  - \_ Vehicles offering a mobile service collecting hazardous materials on behalf of local authorities in line with the TRGS 520
  - \_ Mobile laboratories for collecting hazardous waste directly from customers in line with the TRGS 520
  - \_ Vacuum/cleaning vehicles for cleaning tanks/separators & sewer systems
  - \_ Sprinter vans, Crafter vans etc.
- 1AS = special container for storing and transporting waste



Our MOBIWER truck



REMONDIS' special hazardous waste collection truck

We have a whole range of specialist vehicles – enabling us to select the best transport system for each type of material

REMONDIS Industrie Service is a member of the REMONDIS Group, one of the world's leading recycling, service and water companies. The Group has branches and associated businesses in more than 30 countries in Europe, Asia and Australia. It employs more than 40,000 people who work for millions of citizens and many thousands of companies. The highest levels of quality. Working for the future.

Sometimes only the masculine form is used, though this is only to improve readability, and no discrimination is intended. This refers to persons of any gender (m, f, nb).